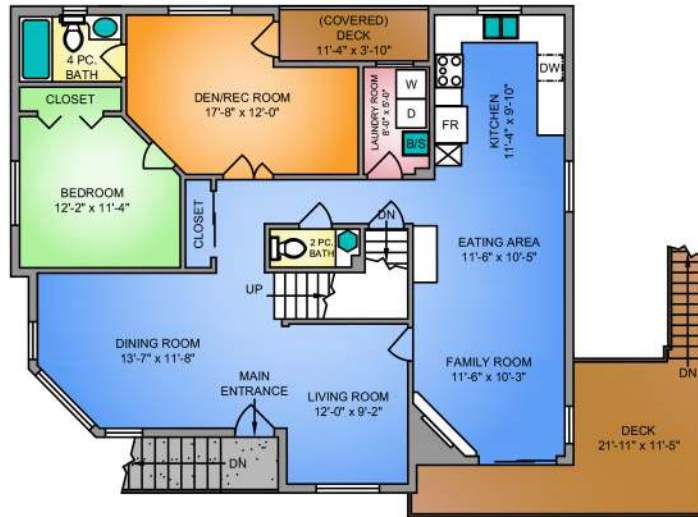




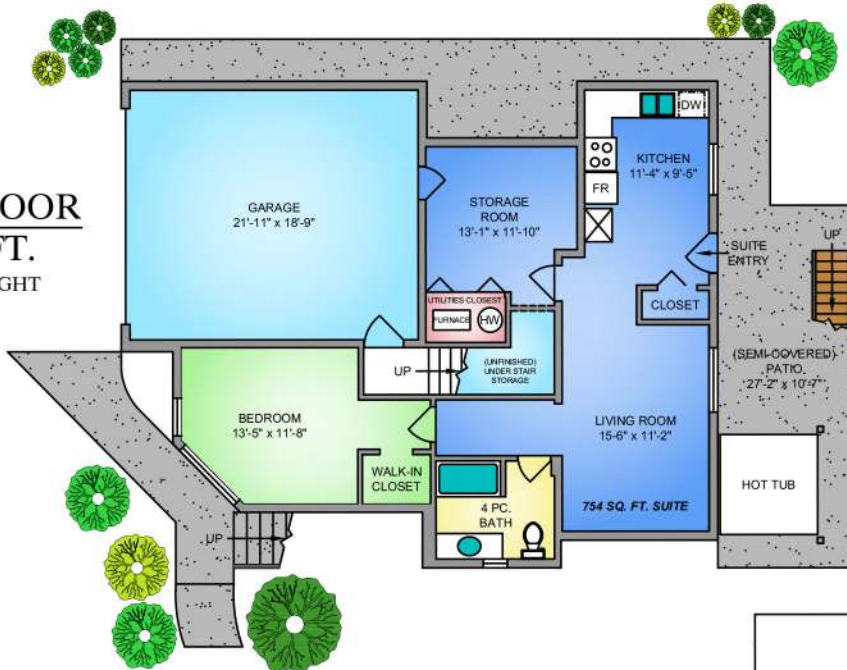
UPPER FLOOR
1217 SQ. FT.
8' CEILING HEIGHT



MAIN FLOOR
1428 SQ. FT.
8' - 17' CEILING HEIGHTS



LOWER FLOOR
986 SQ. FT.
8' CEILING HEIGHT



NORTH



0' 5' 10'
SCALE

3361 RAE STREET
MARCH 30, 2016

PLANS MAY NOT BE 100% ACCURATE, IF CRITICAL BUYER TO VERIFY.

FLOOR	AREA (SQ. FT.)		
	FINISHED	GARAGE	DECK / PATIO
MAIN	1428	-	203
UPPER	1217	-	-
LOWER	986	446	288
TOTAL	3631	446	491